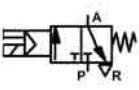
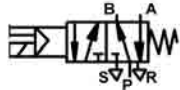
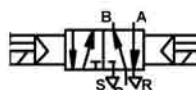
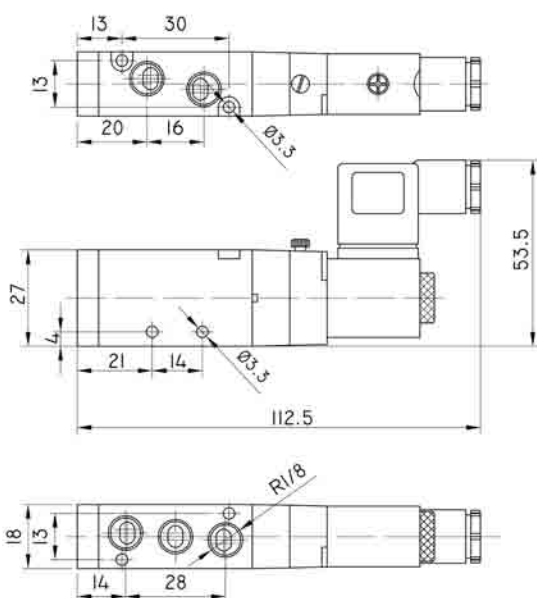


ECO Serisi Elektrik Kumandalı Pnömatik Valfler

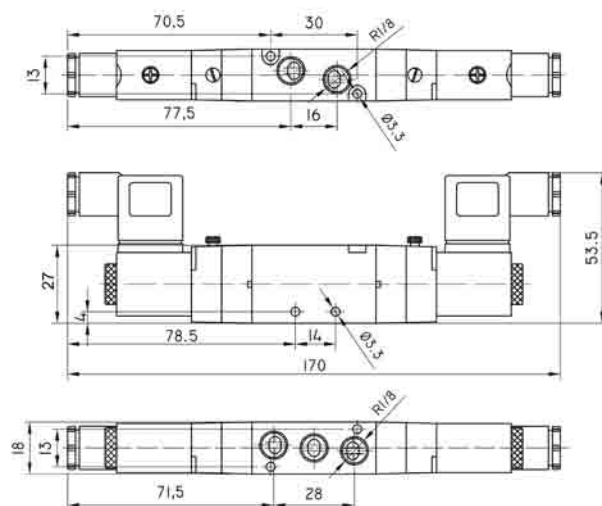


							
Tip No	ESY-32-1/4 eco	ESY-52-1/8 eco	ESY-52-1/4 eco	ESY-52-1/2 eco	EES-52-1/8 eco	EES-52-1/4 eco	EES-52-1/2 eco
Bağlantı Ölçüsü	R 1/4 B.S.P	R 1/8 B.S.P	R 1/4 B.S.P	R 1/2 B.S.P	R 1/8 B.S.P	R 1/4 B.S.P	R 1/2 B.S.P
Sistem Yapısı	Tek Yönde Elektrik Kumandalı, Yay Dönüslü				İki Yönde Elektrik Kumandalı		
Akışkan	Filtrelenmiş Yağlanmış Hava						
Kumanda Şekli	İçten Pilot Hatlı						
Normaldeki Konumu	Normalde Kapalı						
Çalışma Basıncı	P: 1,5 - 9 bar						
Çevre Sıcaklığı	+5 / +50°C						
Bobin Voltajı	220V AC / 110V AC / 24V AC / 12V AC / 24V DC / 12V DC						
Bobin Gücü	AC: 5VA DC: 5W						

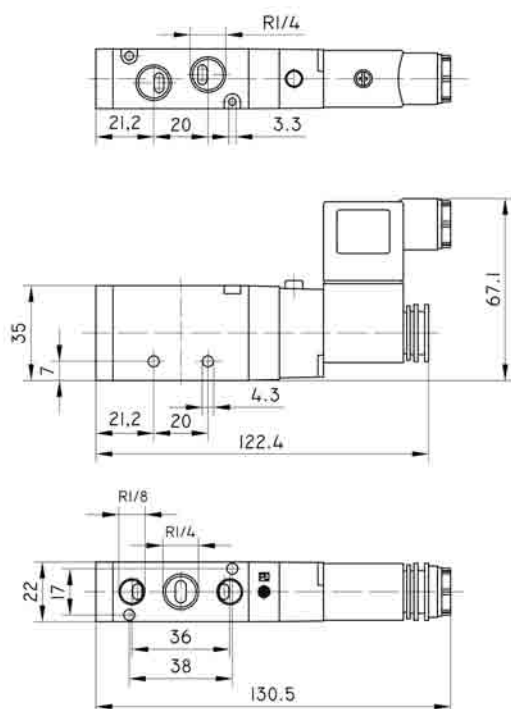
ESY - 52 - 1/8 eco



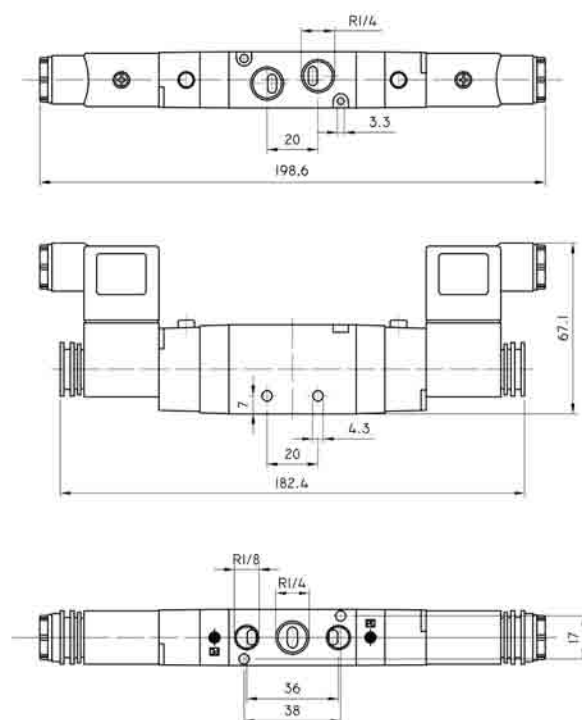
EES - 52 - 1/8 eco



ESY - 52 - 1/4 eco



EES - 52 - 1/4 eco



ECO Serisi
Elektrik Kumandalı Pnömatik Valfler
(Ölçüler)

